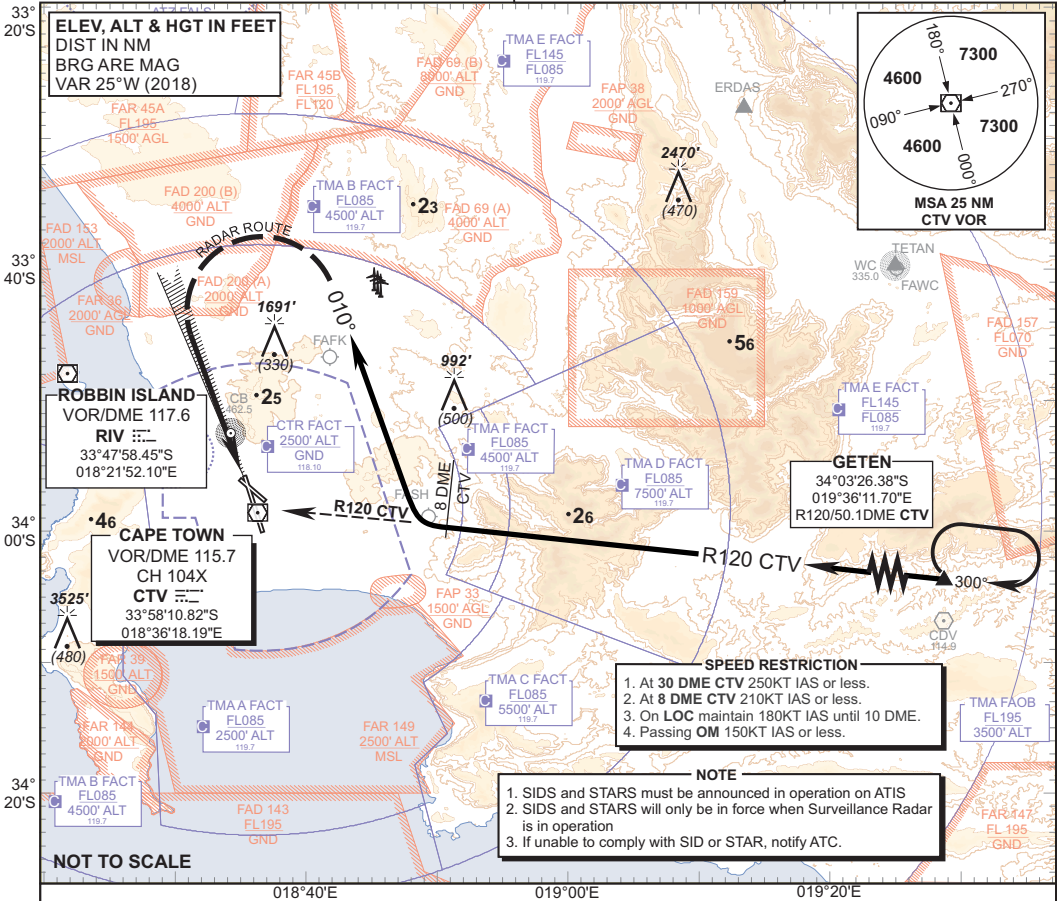


**STANDARD ARRIVAL  
CHART -  
INSTRUMENT  
(STAR)**

TRANSITIONAL ALTITUDE  
**7500'**  
TRANSITIONAL LEVEL  
**ATC**

APP 119.70  
TWR 118.10  
ATIS 127.00

**CAPE TOWN INTL  
RWY 19  
GETEN 1B**



**GETEN 1B RWY 19** : Leave GETEN on R120 CTV. Passing 8DME CTV turn right to track 010° for radar vectoring onto the ILS RWY 19.

**COMMUNICATION FAILURE PROCEDURE (Squawk 7600)**

**Before GETEN:** Proceed to GETEN and enter the GETEN hold. Hold at last assigned level for minimum 5 minutes, then climb/descend to FL100. Leave GETEN at FL100 and continue on the "After GETEN" Communications Failure procedure.

**After GETEN:** Continue on the routing for the GETEN 1B STAR, maintain last assigned level. Crossing R035 CTV on track 010° turn left direct to CTV, then descend to 6500' ALT. On reaching CTV complete the VOR/DME/ILS approach and land RWY 19.

In the event of a missed approach with the intention of diverting to an alternate aerodrome, proceed as follows:

- To the East: Follow the routing for the TETAN 1B SID.
- To the South-East: Follow the routing for the OKTED 1B SID.
- To the North and North-West: Follow the routing for the KODES 1B SID.

APP Frequency changed only  
CHANGE: No other changes were performed